

# BUDGET AND CORPORATE SCRUTINY MANAGEMENT BOARD

12 October 2020

## Sandwell Towns Fund

To update the Budget and Corporate Scrutiny Management Board on the process used to identify Towns Fund project proposals and to seek its views on how elected members can be further engaged with the process going forward.



# Towns Fund Overview

This is a major opportunity for Rowley Regis, West Bromwich and Smethwick and for the whole of Sandwell

This is a **£3.6 billion** fund looking to support Town Deals with **101 towns** who are invited to bid for up to **£25 million** in Town Investment Plans.

This funding has been established as it was believed there is too much focus on growing major cities and the Government recognised the need to invest in smaller towns.

Detailed guidance released June 2020.

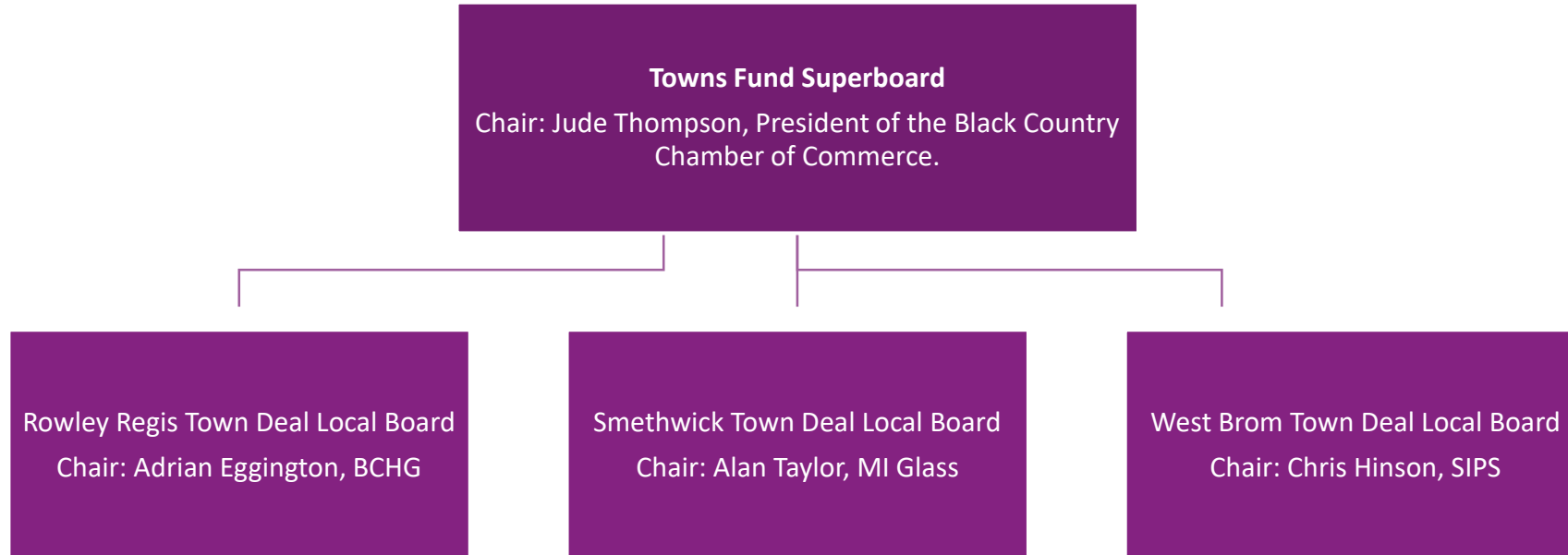
There are three themes within the Towns Fund

1. Urban regeneration, planning and land use
2. Skills and enterprise infrastructure
3. Connectivity

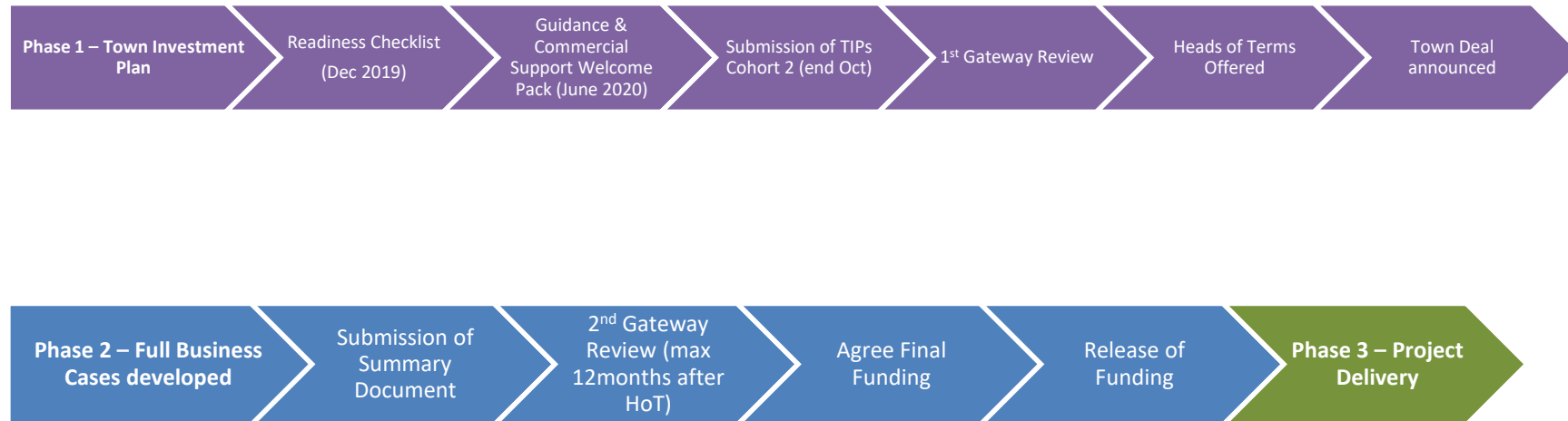
Accelerated funding programme £750K per Town



# Governance



# Towns Fund Programme Timeline



# Overview of Process

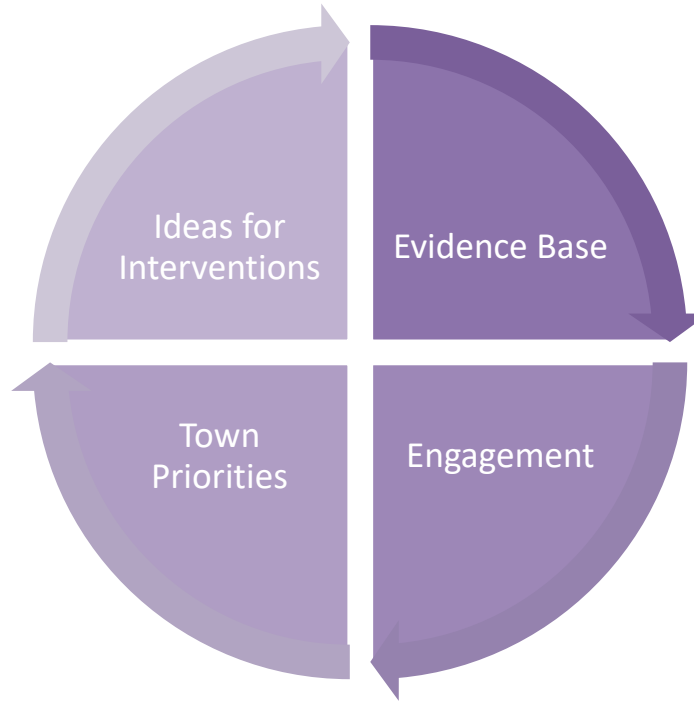
Two key stages for each Town leading to the Town Investment Plans (TIP)

Stage 1 – Ideas Generation

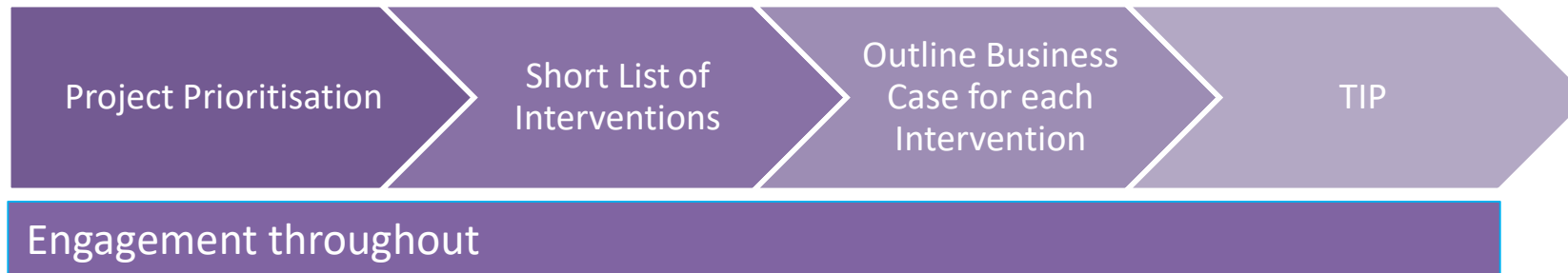
Stage 2 – Intervention Development



# Stage 1 – Ideas Generation



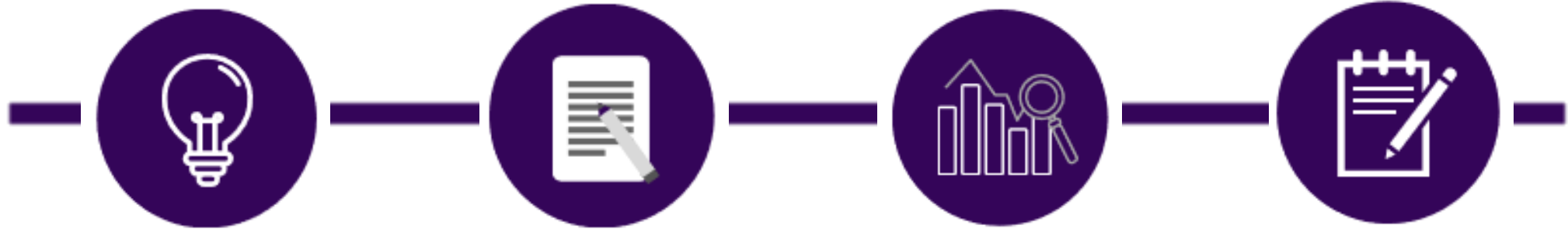
## Stage 2 – Intervention Development



# Project Prioritisation







1

### Sift Ideas Generated

Sift ideas to ensure that the project is broadly compatible with the criteria outlined in Towns Fund guidance and with Sandwell Council's aspirations as set out in the Vision 2030. This will lead to a long list of projects

2

### Complete a Project Proforma

Complete a project proforma for each project on the long list

3

### Score the long list of projects

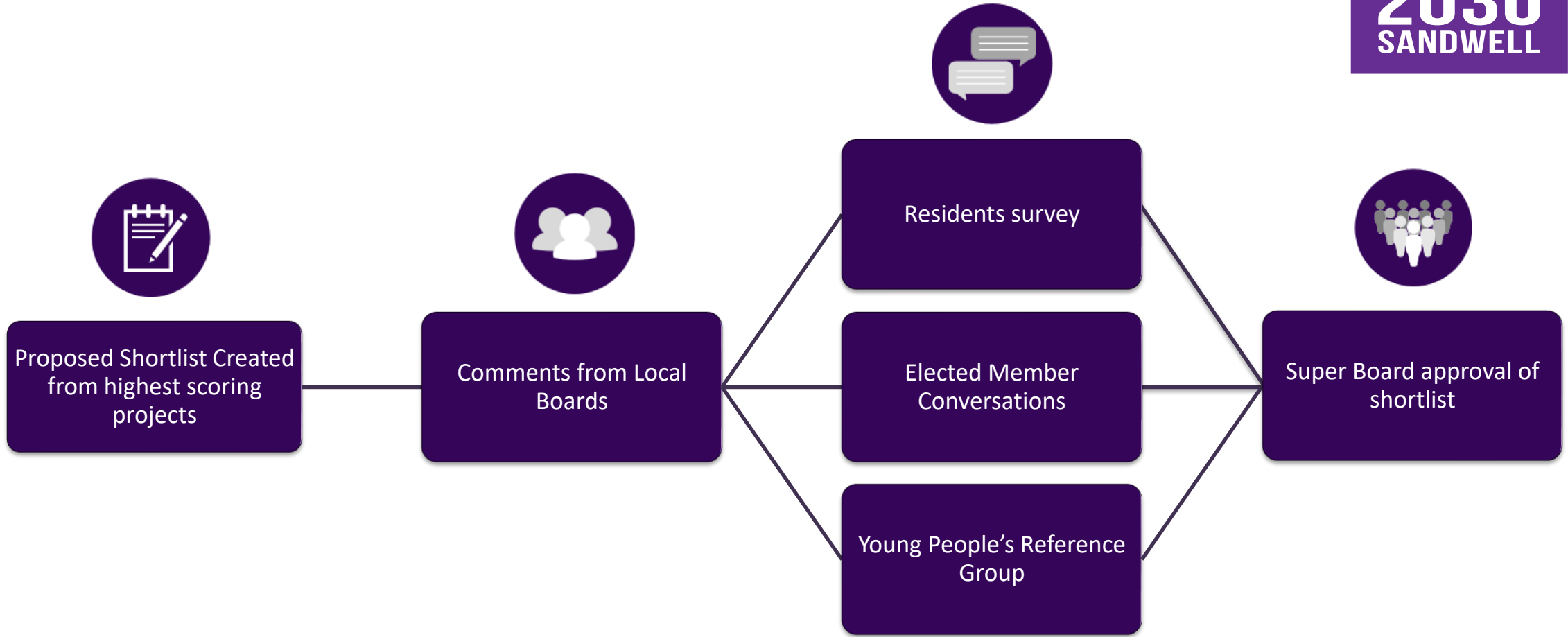
Score the long list of projects against success criteria

4

### Short list the projects

Short list the projects based on the scoring to determine which projects will be included within the TIP for investment from Towns Fund.





Questions?



# West Bromwich Town Investment Plan



# TIP Projects



Project Name	Description	Provisional Ask of the TIP	Match Funding Identified
<b>Securing Sandwell's Engineering: Sandwell's Centre for Civil &amp; Mechanical Engineering Skills</b>	The project will regenerate Sandwell' College's 'Engineering Centre', based in Phoenix Street in West Bromwich. A centre offering opportunity in Construction and Engineering for Adults and young people in programmes for the unemployed, reskilling of the workforce and apprenticeships	£2.7m	Sandwell College c.£330,000
<b>Digital Den</b>	This project creates free to use and supported access to digital and online service, training and qualifications and careers and education support. The overall aim is to reduce digital exclusion and in doing so, reduce financial exclusion.	£42.6k	
<b>West Bromwich Town Centre Development</b>	This project aims to deliver comprehensive regeneration and transformation of the West Bromwich retail submarket through major site assembly and demolition works.  It involves the potential acquisition of Queens Square and Kings Square shopping centre and the demolition of underperforming sites. This is to deliver a significant number of town centre homes, improve the towns declining retail offer, re-purposing surplus accommodation and unlocking large areas of brownfield land for planned regeneration.	£13m	Ongoing negotiations with WMCA
<b>West Bromwich Green Corridor</b>	An urban greening proposal that fall into 4 sections that begin with a central linear park and form a route past and through new and existing development through to Dartmouth Park, supported by a wider cultural arts programme.	£1.22m	Arts Council c.£200k
<b>West Bromwich Travel Scheme</b>	Improved Cycle routes better connecting residents across West Bromwich to Sandwell Valley, Dartmouth Park, the town centre and creating improved cycle provision and crossing facilities.	£1.408m	
<b>West Bromwich Town Hall Quarter</b>	The council is looking to relocate public into the Town Hall and Central Library, creating a public services zone across multiple assets. This involves building a significant extension built on the side of the town hall and renovation of existing buildings.	£6.623m	Council disability access budget - £100,000  From partner (tbc) £400,000  Additional Match tbc



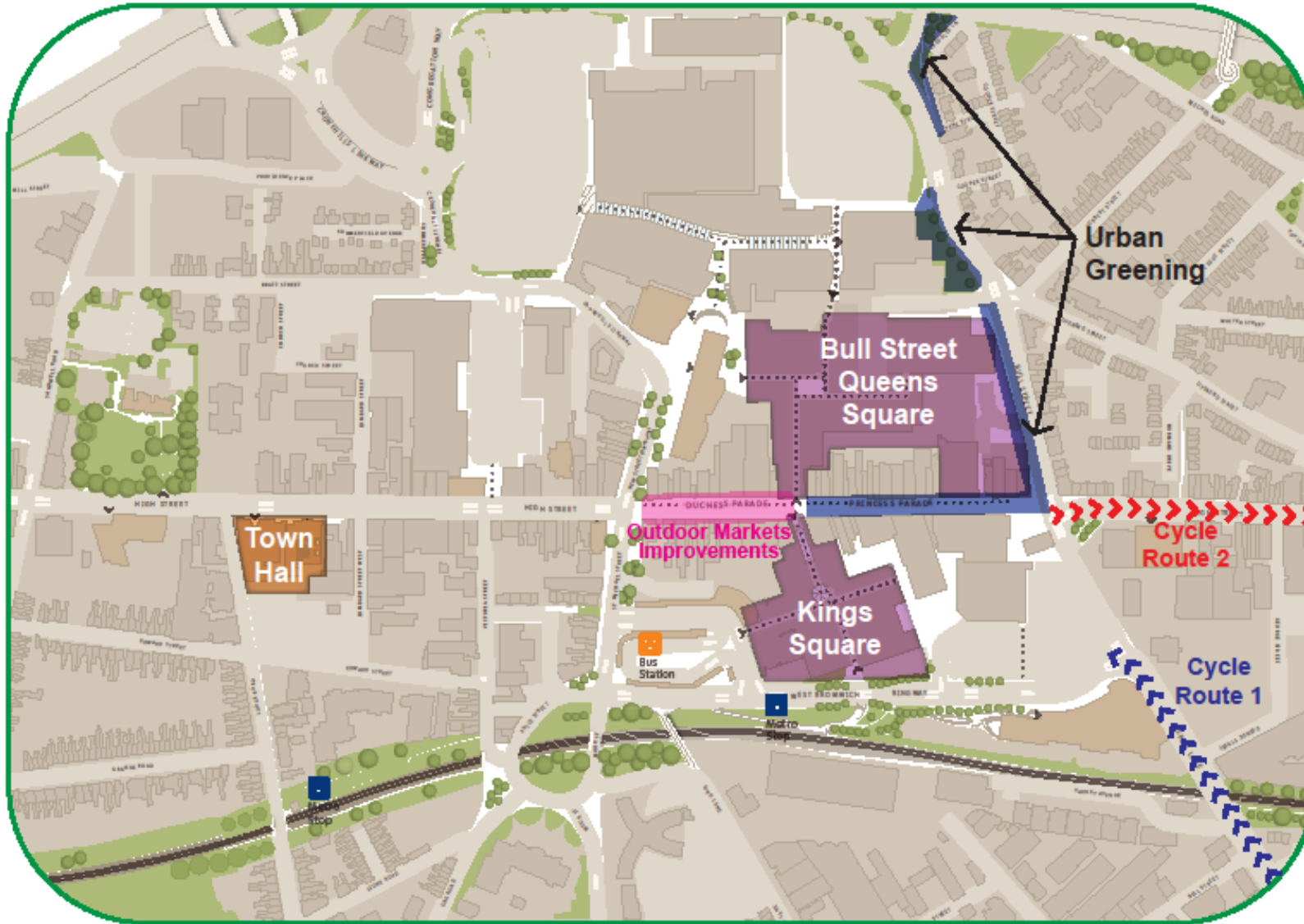
# West Bromwich Accelerated funding Projects



As part of the Towns Fund process, we were invited to bid for an additional £750k for accelerated projects that could be delivered by March 2021. Below are the two projects we will receive funding for and are an important part in kickstarting the regeneration of West Bromwich.

Project Name	Description	Funding
<b>Outdoor Market Redevelopment</b>	It is evident, simply looking at the High Street, that its most prominent, and also most detractive feature, is the street market structure located centrally down the promenade. SMBC proposes to undertake a programme of inventive, comprehensive and transformational improvement works to these to ensure that they are fit for purpose and no longer detract from the area.	£440,000
<b>Improvements to WB Town Hall</b>	To complete the refurbishment of the Tower of West Bromwich town hall. Refurbishing this local landmark is the initial part of a much wider renovation and will symbolise the beginning of that process.	£310,000





# Rowley Regis Shortlisted Projects








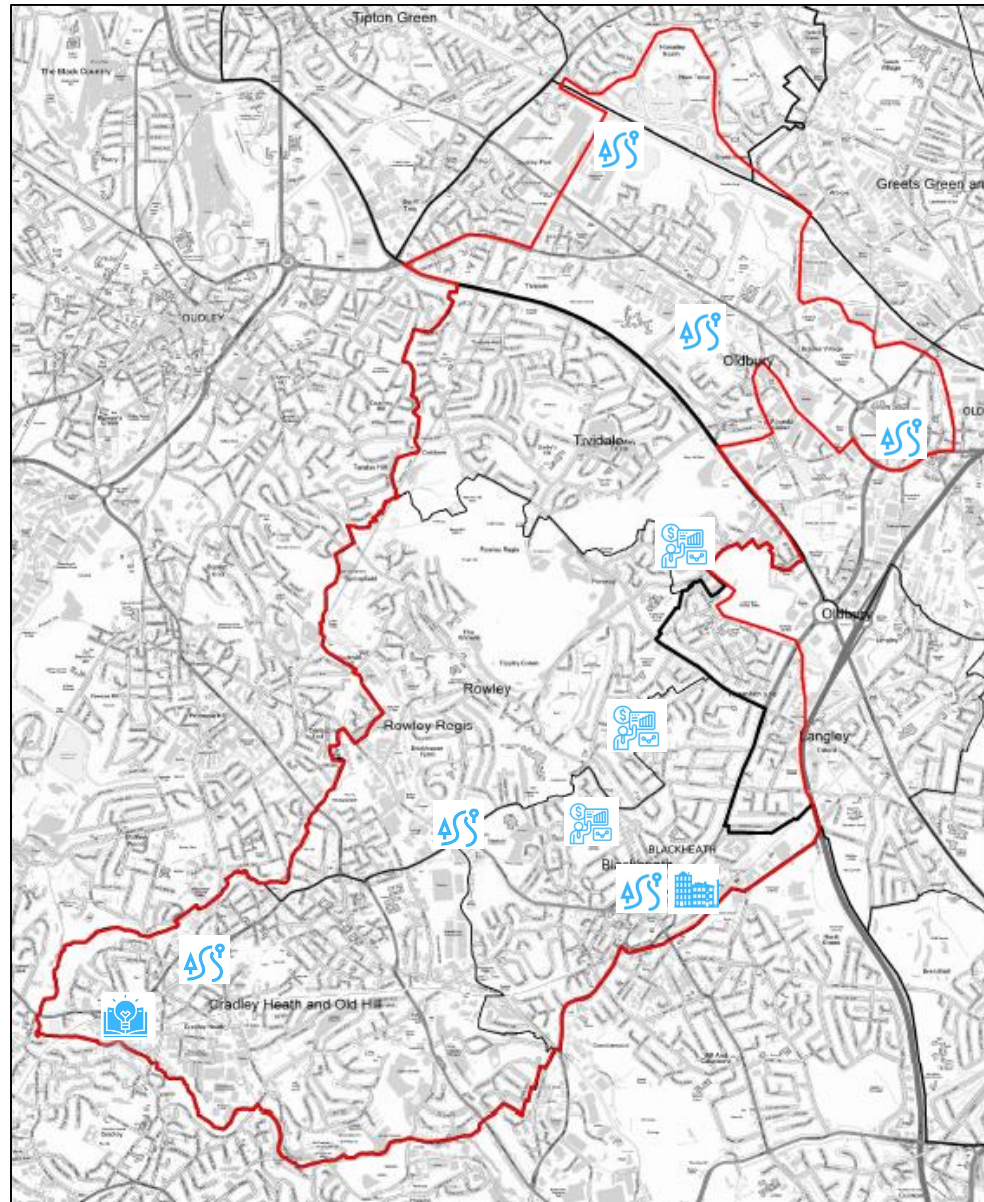


Project Name	Description	Provisional Ask of the TIP	Match Funding Identified
<b>Britannia Park Project</b>	The construction of new changing room and centre facilities, general improvements to park entrances, walkways and cycle routes throughout the park, improved lighting and security to make it a more attractive venue.	£2.46m	S106 funds £12k  FA and Football Foundation (Amount tbc)
<b>Rowley Regis- Education Facility</b>	The construction of a satellite education facility located in Cradley Heath through a partnership between Sandwell College and SMBC. The project will provide options for three groups of learners: 16-18-year olds; 19-24-year-old NEET; 25+ (un)employed adults.	£11.2m	Amount TBC
<b>Canal Network Improvement: Dudley No2</b>	Tow path improvements along Dudley No.2 Canal (between Windmill End and access to Old Hill Train Station) to improve walking and cycling along this route and access improvements to estate areas.	£0.75m	
<b>Canal Network Improvement: Old Mainline</b>	Tow path improvements along Old Mainline and Gower Branch canal from Tividale Aqueduct (Netherton Tunnel) to Rounds Green Road, Oldbury to improve walking and cycling along this route and access improvements to estate areas. This includes Rose Lane and John's Lane tunnels and building connections to Rattlechain TIP development site.	£1.4m	Greener Cities Fund £120k
<b>Rowley Regis Travel Scheme</b>	Improvement of walking and cycling routes within and between Blackheath, Cradley Heath and Oldbury improving pedestrian mobility via sustainable modes of transport.	£1.3m	
<b>Energy Efficiency Scheme</b>	Installing air source heat pumps at Darley House and surrounding low rise blocks, St Giles and Moorland's Court improving fuel efficiency, reducing fuel poverty and replacing outdated heating systems. Utilising this first of kind project in Sandwell to upskill young residents and those seeking new opportunities to train and learn new skills in a growing and sustainable industry.	£5.9m	Housing Revenue Account (Amount tbc)
<b>Blackheath Bus Interchange and Social Space</b>	Removing through traffic from Blackheath Town Centre, reallocating space for pedestrians and cyclists, creating a new bus interchange and developing social space in Market Place.	£4.5m	TfWM (Amount tbc)



**Key:**

-  Connectivity Improvements
-  Site Redevelopment
-  Asset Based Improvements
-  Skills Infrastructure
-  Town Centre Improvements



As part of the Towns Fund process, we were invited to bid for an additional £750k for accelerated projects that could be delivered by March 2021. Below are the seven projects we applied for and are an important part in kickstarting the regeneration of Rowley Regis.

Project Name	Description	Funding
<b>Blackheath Town Centre Pedestrian and Cyclist connectivity to Rowley Regis Train Station.</b>	Avenue Road link from Blackheath town centre to Rowley Regis Station improved for pedestrians/cyclists: new lighting on re-sited columns, side-road crossings, resurfacing, signs and lines	£176,508
<b>Oldbury Town Centre Pedestrian and Cyclist connectivity</b>	Upgrade Ringway crossing to toucan spec, install tiger crossing on Rounds Green Rd; add marked cycle paths around Ringway to build on recent traffic calming, pedestrian and cycle priority schemes	£213,141
<b>Tividale Park Improvements</b>	Renovate disused changing rooms; accessibility improvements to adjoining community hub; create new car park, lighting, security bollards	£133,949
<b>Bearmore Open Space Improvements</b>	Install play equipment to complement existing infrastructure	£45,980



Project Name	Description	Funding
<b>Britannia Park Phase 1 Improvements</b>	Phase 1: Demolition of changing rooms. (Phase 2: Replacement to form part of TIP proposals).	£54,750
<b>Warrens Hall Improvements</b>	Upgrade key paths around site to all-weather surfaces; improve entrances; create fishing platforms at Swan Pool	£66,550
<b>Haden Hill Park Improvements</b>	Create sensory garden with several new access paths, various species of plants, raised planters and a picnic area with accessible picnic benches.	£57,200



# Smethwick Shortlisted Projects

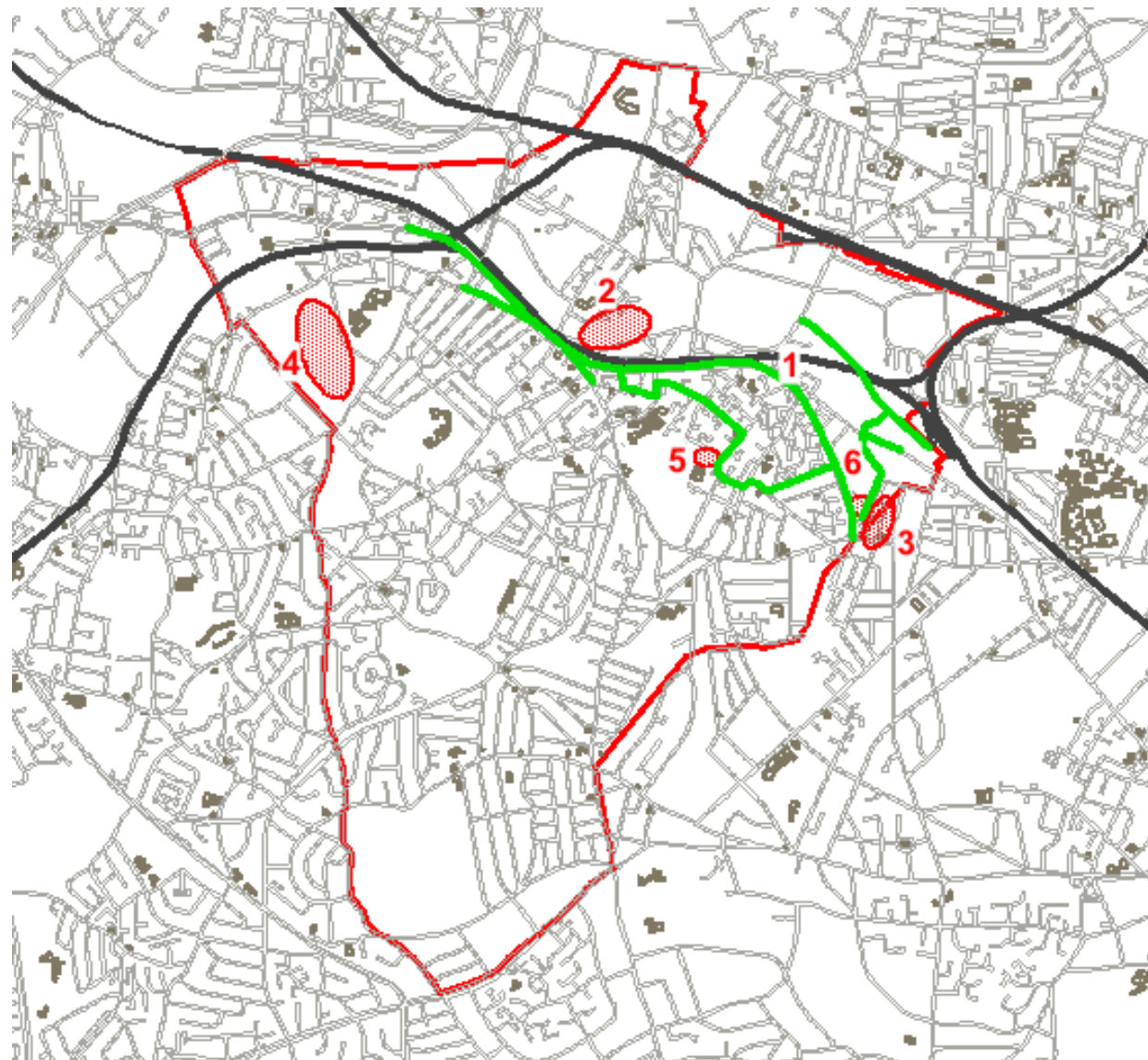


# TIP Projects



Project Name	Description	Provisional Ask of the TIP	Match Funding Identified
<b>Smethwick Travel Scheme: Cycle and Walking Provision</b>	Creating cycle and pedestrian links from two railway stations to the town centre and local hospital. The scheme aims to improve access and connectivity within Smethwick by delivering cycling and walking infrastructure improvements and improving safety	£4.2m	TBC - AQ Centre LEP Transforming Cities Fund – WMCA
<b>Grove Lane Regeneration: Housing Development</b>	Acquisition and remediation of selected sites within the Grove Lane area to accelerate regeneration for housing delivery, the first phase of a comprehensive major regeneration project to deliver in excess of 800 new homes and associated infrastructure.	£4.35m	TBC – WMCA, Homes England (subject to business case)
<b>Youth, Community and Sports Smethwick: Albion Family in the Park</b>	A dedicated Youth, Community, Sport and Education Space in the renovated West Smethwick Park, creating a financially sustainable, all-year youth, community, sport and education offer for Smethwick.	£1.25m	Heritage Lottery £5m FA Premier League & Football Foundation £1.5m
<b>Rolfe Street Regeneration</b>	Demolition and remediation to provide a stand-alone development ready site, which will provide much needed housing and potential space for small enterprises, to support the wider regeneration of the Town and link to the opportunities around the Hospital.	£2m	Potential source that could be approached for 10% Potential match funding opportunity from WMCA
<b>Centre for Health Education</b>	Major new skills resource, covering training from entry level to L7 skills, linked to the hospital development. Providing a university presence in Smethwick	£14m	Amounts TBC
<b>Sandwell Adult Family Learning: Ron Davis Centre</b>	The expansion of the Ron Davis centre through the addition of three extra classrooms, enabling the expansion of the successful Sandwell Adult Family Learning services	£300k	





1. Connectivity – Cycling and Walking
2. Rolfe Street
3. Grove Lane
4. Albion Family in the Park
5. Ron Davis Centre
6. Health Education Facility



# Accelerated funding Projects



As part of the Towns Fund process, we were invited to bid for an additional £750k for accelerated projects that could be delivered by March 2021. Below is the project we have applied for. It is an important part in kickstarting the regeneration of Smethwick.

Project Name	Description	Funding
<b>Tollhouse Way Cycle and Walking Scheme</b>	To deliver a cycle path along A457 Tollhouse Way to Smethwick Galton Bridge station with improved crossing points and footway enhancements along the High Street, including pedestrian footway improvements to the entrance of all side roads.	£750,000

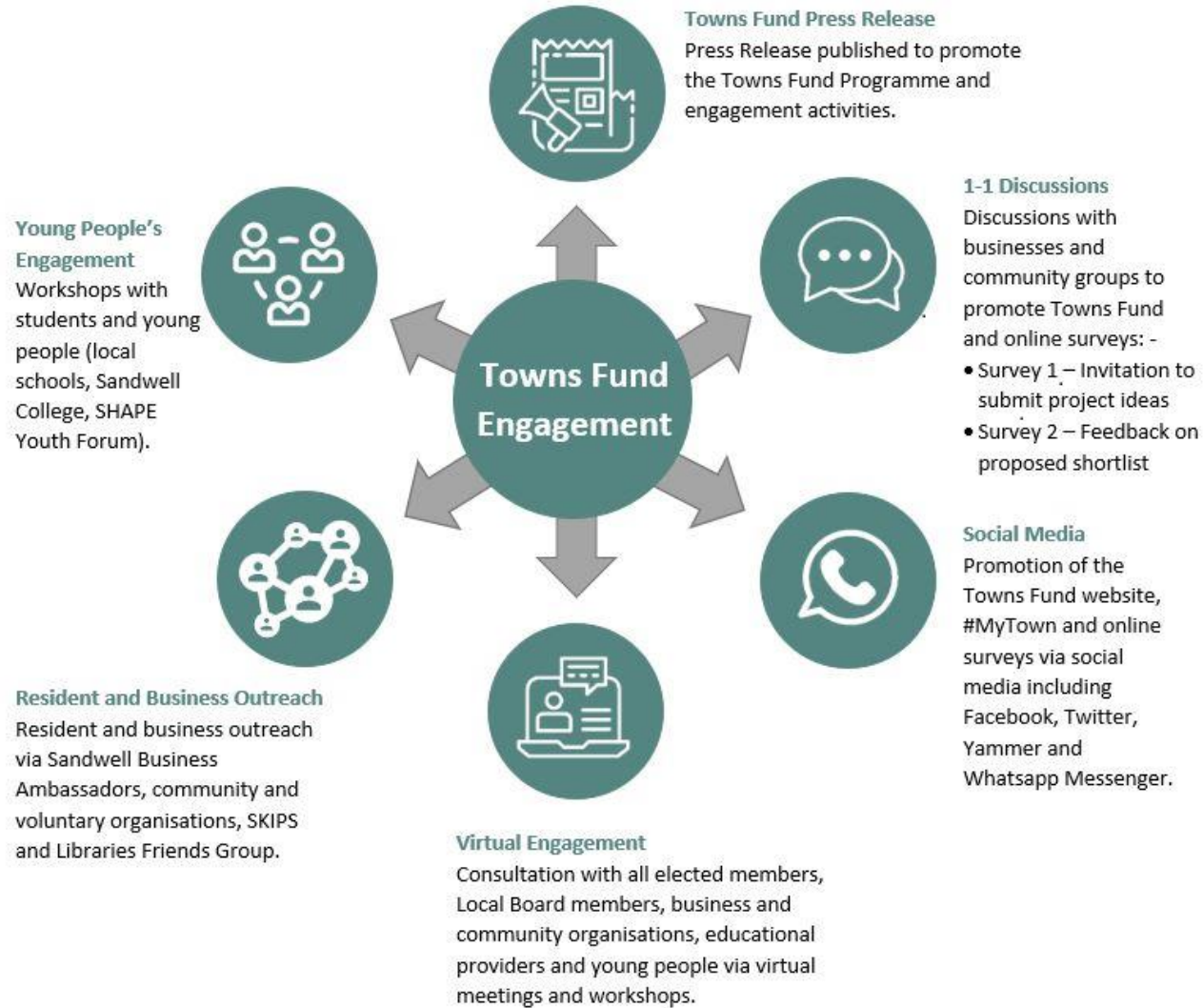




## Member Engagement :

- Economy, Skills, Transport and Environment Scrutiny Board – Feb 2020
- Cabinet July 2020
- Virtual Discussions with Elected Members in each of the Towns via Town Member meetings / specific Towns Fund discussions (July, August and September)
- Cabinet Members + Town Leads on Local Boards (plus 1:1 discussions)
- Initial Project Design Workshops (with partners) - October





## Next Steps after TIP Submission

*If TIP is successful – Town Deal Announced*

- Phase 2 – Develop Full Business Cases (opportunity to shape project design and features)
  
- Phase 3 – Project Delivery



## Member engagement for Phase 2 and Phase 3

How can we ensure good engagement with Councillors throughout the programme?

- *project-orientated workshops*
- *Regular virtual updates*
- *Continuing conversations around the project pipelines at Town level*

How does scrutiny want to be involved in the next steps for the Towns Fund?

